



*Total Solution Provider in Saw Device*

---

# SL6220ET

62.5 MHz IF SAW Filter  
21.2 MHz Bandwidth  
Revision 0: 12. February. 2008



- Electrical Characteristics
  - Package Dimensions
  - Testing Environment
  - Frequency Characteristics
- 

**SAWNICS Inc.**

---

460 Cheonheung-ri, Seonggeo-eup, Cheonan-si, Chungcheongnam-do, 330-836 / Korea.  
Tel: +82 41 550 9372 / Fax: +82 41 550 9399 / [www.sawnics.com](http://www.sawnics.com)

## □ Electrical Characteristics

### Maximum Ratings

Parameters Description	Unit	Minimum	Typical	Maximum
Operating Temperature Range	°C	-30	-	80
Storage Temperature Range	°C	-40	-	85
Maximum DC Voltage	V	-	-	10
Maximum Input Power	dBm	-	-	10
Source Impedance (single ended) <sup>(1)</sup>	Ω	-	50	-
Load Impedance (single ended) <sup>(1)</sup>	Ω	-	50	-
Package type & size	T			
Length x Width	mm <sup>2</sup>	-	9.1 x 4.8	-
Height	mm	-	-	1.5

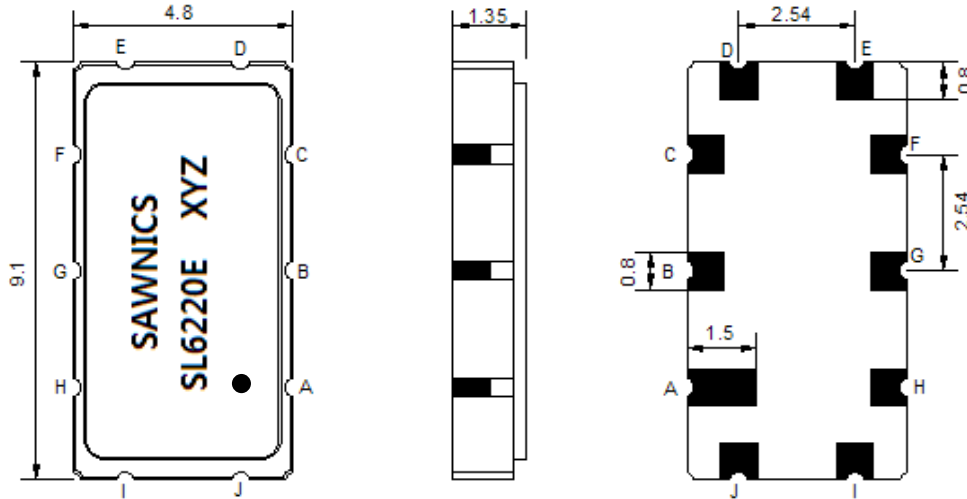
### Electrical Specification

Parameters Description	Unit	Minimum	Typical	Maximum
Center Frequency (Fo)	MHz	-	62.9	-
Insertion Loss at Fo	dB	-	18.0	20.5
Group Delay Variation at 62.5MHz ±9.75MHz	nsec	-	20	40
Absolute Delay at Fo	usec	-	0.91	-
Passband Ripple at 62.5MHz ±9.75MHz	dB	-	0.30	1.0
Bandwidth at -1dB	MHz	20.7	21.2	-
Bandwidth at -3dB	MHz	21.8	22.2	-
Bandwidth at -20dB	MHz	-	24.9	-
Bandwidth at -30dB	MHz	-	25.6	26.5
Bandwidth at -40dB	MHz	-	26.9	28.0
Relative Attenuation:				
62.5MHz -12.5MHz	dB	35	40	-
Lower sidelobe	dB	40	45	-
Upper sidelobe	dB	40	45	-

**Notes :** (1) With Matching Network (Ref. Testing Environment Circuit as shown below).

Those impedances could be modified with different impedance values and/or structures, if necessary.

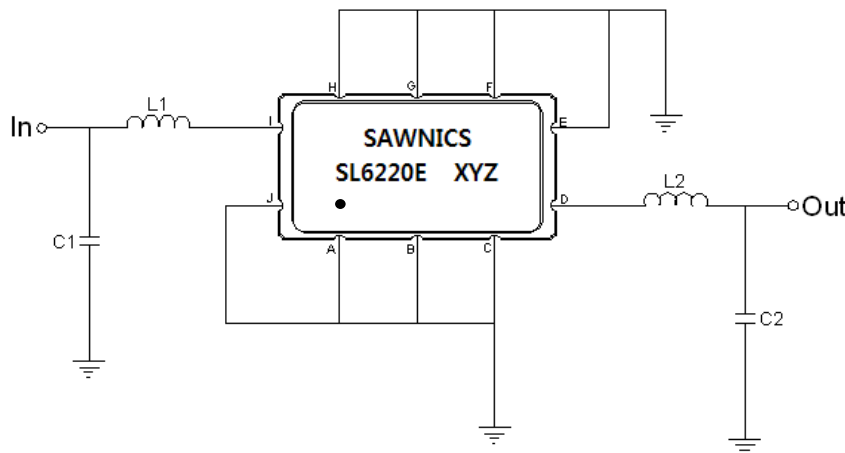
### Package Dimensions



- ① SAWNICS: Brand
- ② SL6220E: Model Name
- ③ X : Date Code (Year)
- ④ Y : Date Code (Month)
- ⑤ Z : Date Code (Date)
- : Index Dot

Pin Description	
A, B, C, E, F, G, H, J	Ground
I	Input
D	Output

### Testing Environment



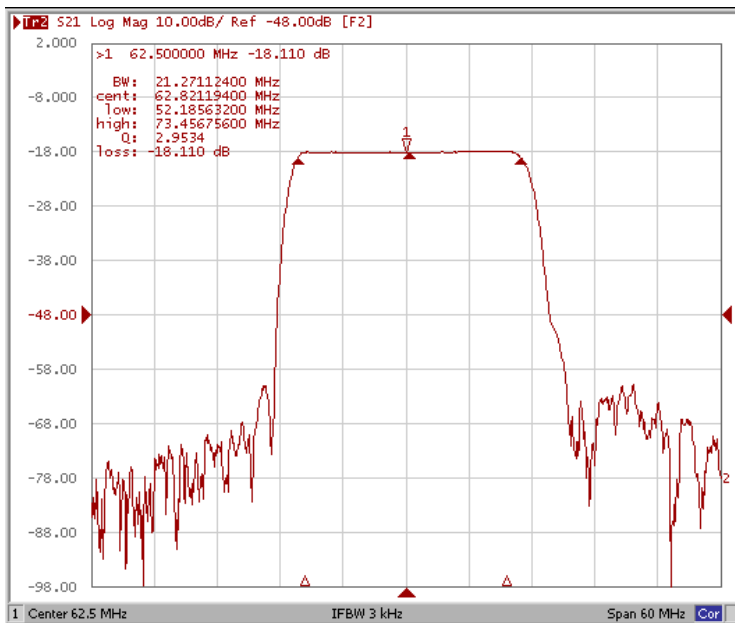
Test Fixture & Values	
Input	L1 = 180 nH, C1 = 22 pF
Output	L2 = 180 nH, C2 = 22 pF
Source/Load Impedance	50 Ω



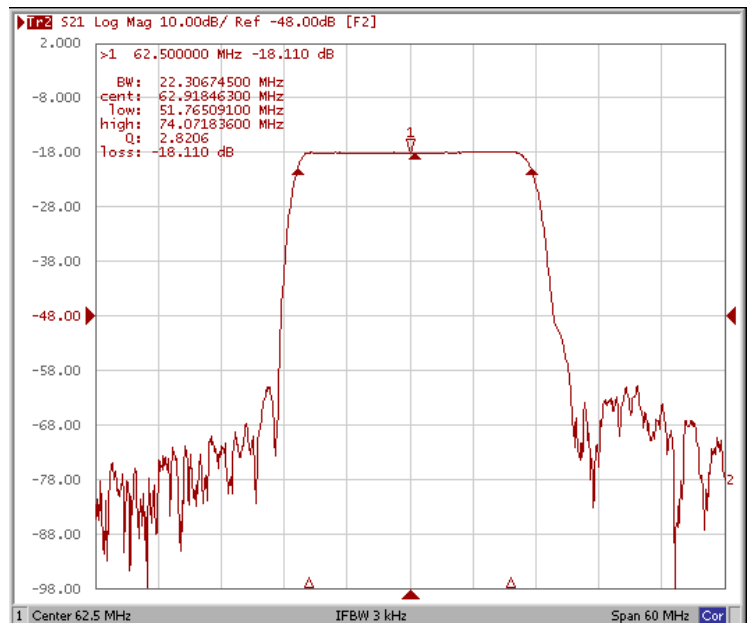
### Frequency Characteristics

#### Frequency Response

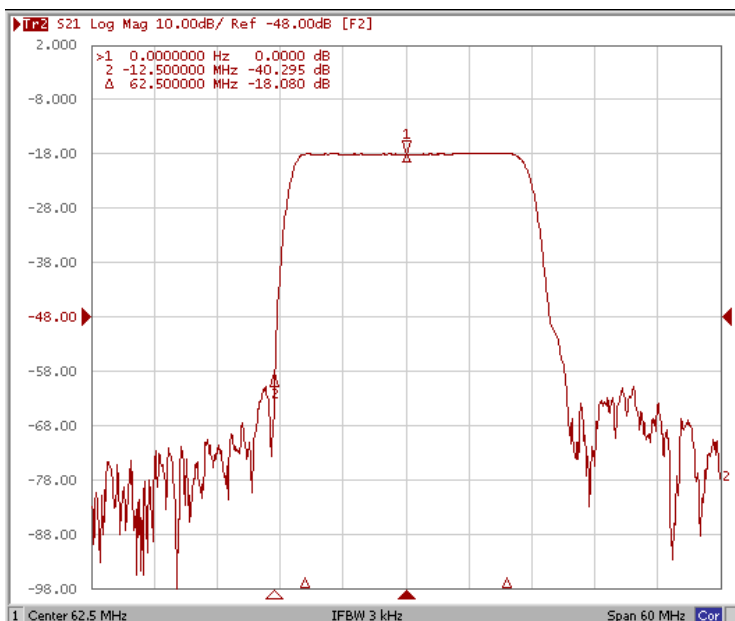
Bandwidth at -1.0 dB



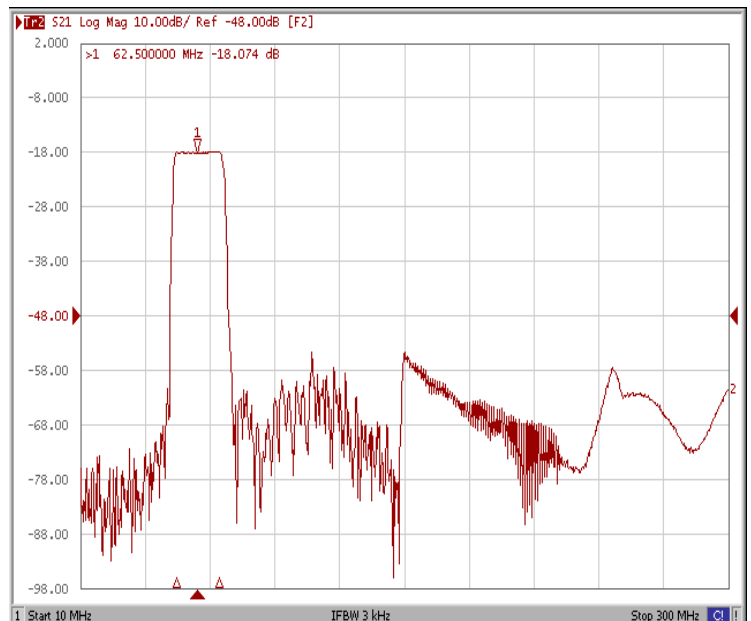
Bandwidth at -3.0 dB



Attenuation 62.5MHz -12.5MHz



Wide-Band

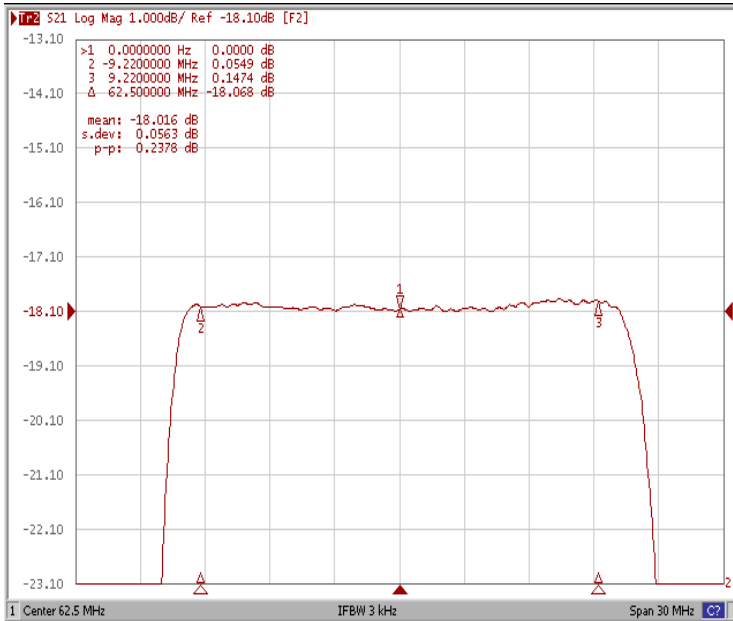




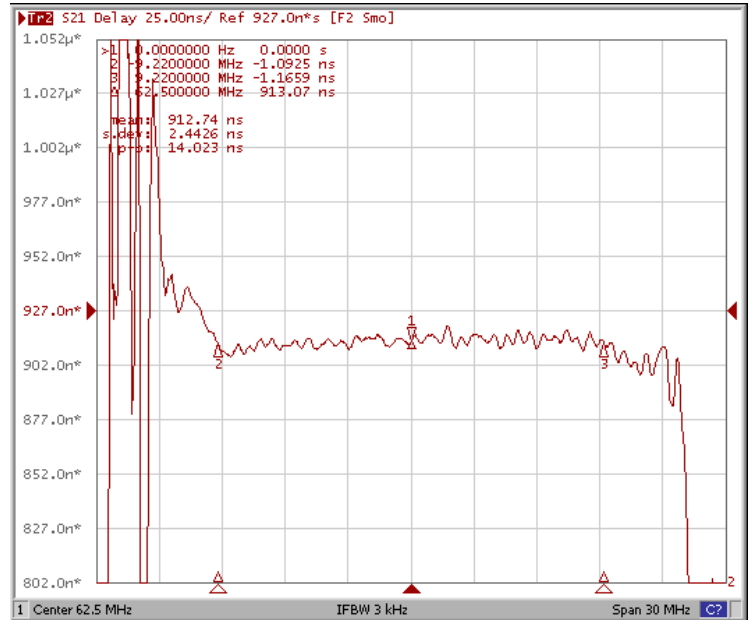
### Frequency Characteristics

#### Frequency Response

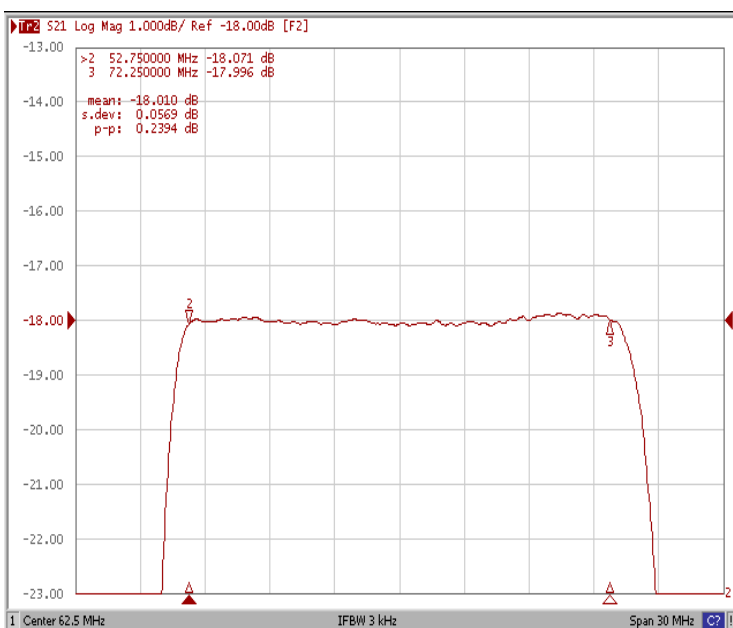
#### Ripple Variation 62.5MHz ±9.22MHz



#### Group Delay Variation 62.5MHz ±9.22MHz



#### Ripple Variation 62.5MHz ±9.75MHz



#### Group Delay Variation 62.5MHz ±9.75MHz

